

REVIEWED

By Tamara Salazar at 9:22 am, Jul 20, 2021



7/8/2021

Worklist: 5087

<u>LAB CASE</u>	<u>ITEM</u>	<u>ITEM TYPE</u>	<u>DESCRIPTION</u>	
M2021-0310	2	BCK	AM 25/AM 26 Blood MultiDrug/THC Screen by LC-QQQ	
M2021-0928	1	BCK	AM 25/AM 26 Blood MultiDrug/THC Screen by LC-QQQ	
M2021-2473	1	BCK	AM 25/AM 26 Blood MultiDrug/THC Screen by LC-QQQ	
M2021-2636	1	BCK	AM 25/AM 26 Blood MultiDrug/THC Screen by LC-QQQ	
M2021-2700	2	BCK	AM 25/AM 26 Blood MultiDrug/THC Screen by LC-QQQ	
M2021-2777	2	BCK	AM 25/AM 26 Blood MultiDrug/THC Screen by LC-QQQ	
M2021-2781	2	BCK	AM 25/AM 26 Blood MultiDrug/THC Screen by LC-QQQ	
M2021-2828	3	BCK	AM 25/AM 26 Blood MultiDrug/THC Screen by LC-QQQ	
P2021-2082	1	BCK	AM 25/AM 26 Blood MultiDrug/THC Screen by LC-QQQ	
P2021-2086	1	BCK	AM 25/AM 26 Blood MultiDrug/THC Screen by LC-QQQ	
P2021-2087	1	BCK	AM 25/AM 26 Blood MultiDrug/THC Screen by LC-QQQ	
P2021-2088	1	BCK	AM 25/AM 26 Blood MultiDrug/THC Screen by LC-QQQ	
P2021-2120	2	BCK	AM 25/AM 26 Blood MultiDrug/THC Screen by LC-QQQ	
P2021-2133	1	BCK	AM 25/AM 26 Blood MultiDrug/THC Screen by LC-QQQ	
P2021-2134	1	BCK	AM 25/AM 26 Blood MultiDrug/THC Screen by LC-QQQ	
P2021-2135	1	BCK	AM 25/AM 26 Blood MultiDrug/THC Screen by LC-QQQ	
P2021-2136	1	BCK	AM 25/AM 26 Blood MultiDrug/THC Screen by LC-QQQ	
P2021-2139	1	BCK	AM 25/AM 26 Blood MultiDrug/THC Screen by LC-QQQ	
P2021-2165	1	BCK	AM 25/AM 26 Blood MultiDrug/THC Screen by LC-QQQ	
P2021-2174	1	BCK	AM 25/AM 26 Blood MultiDrug/THC Screen by LC-QQQ	
P2021-2185	1	BCK	AM 25/AM 26 Blood MultiDrug/THC Screen by LC-QQQ	

Worklist: 5087

<u>LAB CASE</u>	<u>ITEM</u>	<u>ITEM TYPE</u>	<u>DESCRIPTION</u>	
P2021-2189	1	BCK	AM 25/AM 26 Blood MultiDrug/THC Screen by LC-QQQ	
P2021-2197	1	BCK	AM 25/AM 26 Blood MultiDrug/THC Screen by LC-QQQ	
P2021-2198	1	BCK	AM 25/AM 26 Blood MultiDrug/THC Screen by LC-QQQ	
P2021-2199	1	BCK	AM 25/AM 26 Blood MultiDrug/THC Screen by LC-QQQ	
P2021-2204	1	BCK	AM 25/AM 26 Blood MultiDrug/THC Screen by LC-QQQ	

AM# 25: Multi-Drug Screen in Blood and Urine by LC-MS/MS

Extraction Date: 7/08/2021

Plate lot#: 210611

Mobile phase A: 10mM Amm Form

Instant Buffer I

Blank Blood Lot: Lampire 20L20723

LCMS-QQ ID: 069901

Analyst: Amber Gerheart

Plate Retest Date: 12/11/2021

Mobile phase B: 0.1% Formic Acid in MeOH

Ethyl Acetate

LC Methanol

Column: Phenomenex Phenyl Hexyl (4.6x50mm, 2.6um)

Blank Urine Lot:N/A

Pre-Analytic:

- 1. Check levels of mobile phases and needle wash refill as needed. Ensure waste is not full.
- 2. Ensure correct column is installed and begin mobile phase flow allow to equilibrate ~ 30 minutes.

Analytic:

- 1. Remove standards, plate, controls, and samples from cold storage. Allow to reach room temperature.
- 2. Urine Hydrolysis: In blank well, add 250µL urine, 40µL BG Turbo, and 100µL Instant Buffer I. Place on plate shaker for 5 minutes.
- 3. Using a calibrated pipette, pipette **250µL blood and urine** (if applicable) into wells of analytical (standards) plate.
Pipette ID: 42
- 4. Place on shaking incubator at ambient temp., 900rpm for 15 minutes.
- 5. Pipette **250µL 0.5 M ammonium hydroxide** in wells of analytical plate.
- 6. Place on shaking incubator at ambient temp., 900rpm for 15 minutes.
- 7. Transfer **200-450µL of blood+base and urine+base (if applicable)** mixture to corresponding wells of SLE+ plate.
Amount transferred: 300µL
- 8. Apply positive pressure for approx. 10-15 seconds (or until no liquid remains on top of sorbent).
(Load at 85-100 PSI- Selector to the right).
- 9. Wait 5 minutes.
- 10. Add **900uL ethyl acetate.**
- 11. Wait 5 minutes.
- 12. Apply positive pressure for approx. 15 seconds. *(10-15 PSI- Selector to the left).*
- 13. Add **900uL ethyl acetate.**
- 14. Wait 5 minutes.
- 15. Apply positive pressure for approx. 15 seconds. *(10-15 PSI- Selector to the left).*
- 16. Remove plate containing eluate. Place on SPE Dry and evaporate to dryness at approx. 35°C. If run contains urine, add 50µL 1% HCl in MeOH to wells and place plate cover on plate before drying.
- 17. Reconstitute in **100µL 20% LC MeOH** and heat seal plate with foil. Place in autosampler and run worklist.

Post-Analytic

- 1. Open quantitation software and create a new quantitation batch.
- 2. Make necessary changes to integration limits
- 3. Evaluate samples, S/N of primary transition >5 and S/N of secondary transition >3 or evaluation of peak symmetry and resolution. Within +/- 2% or 0.1 min RT of administrative control. Calculated concentration of 5 or greater or 2-5 for discretionary range.
- 4. Did all QCs pass for each analyte? If no, describe issue in comments (below).
- 5. Central File Packet to include: LIMS Worklist, Method Checklist, Calibration and Control Reports

COMMENTS:

P2021-2135-1, P2021-2197-1, P2021-2198-1, P2021-2199-1 moved on SLE plate due to a blood clot.

	1	2	3	4	5	6	7	8	9	10	11	12
A	IS + Cal. 1	M2021-2777-2	P2021-2133-1	P2021-2189-1	IS + Sample	P2021-2135-1	IS + Sample	IS + Sample	IS + Sample	IS + Sample	IS + Sample	IS + Sample
B	IS + Cal. 1	M2021-2781-2	P2021-2134-1	P2021-2197-1 (Moved to C6)	IS + Sample	P2021-2198-1	IS + Sample	IS + Sample	IS + Sample	IS + Sample	IS + Sample	IS + Sample
C	Blood Negative	M2021-2828-3	P2021-2135-1 (Moved to A6)	P2021-2198-1 (Moved to B6)	IS + Sample	P2021-2197-1	IS + Sample	IS + Sample	IS + Sample	IS + Sample	IS + Sample	IS + Sample
D	M2021-0310-2	P2021-2082-1	P2021-2136-1	P2021-2199-1 (Moved to D6)	IS + Sample	P2021-2199-1	IS + Sample	IS + Sample	IS + Sample	IS + Sample	IS + Sample	IS + Sample
E	M2021-0928-1	P2021-2086-1	P2021-2139-1	P2021-2204-1	IS + Sample	IS + Sample	IS + Sample	IS + Sample	IS + Sample	IS + Sample	IS + Sample	IS + Sample
F	M2021-2473-1	P2021-2087-1	P2021-2165-1	IS + Sample	IS + Sample	IS + Sample	IS + Sample	IS + Sample	IS + Sample	IS + Sample	IS + Sample	IS + Sample
G	M2021-2636-1	P2021-2088-1	P2021-2174-1	IS + Sample	IS + Sample	IS + Sample	IS + Sample	IS + Sample	IS + Sample	IS + Sample	IS + Sample	IS + Cal. 1
H	M2021-2700-2	P2021-2120-2	P2021-2185-1	IS + Sample	IS + Sample	IS + Sample	IS + Sample	IS + Sample	IS + Sample	IS + Sample	IS + Sample	IS + Cal. 1

All wells to contain 60 µl of residual DMSO

210611

AG

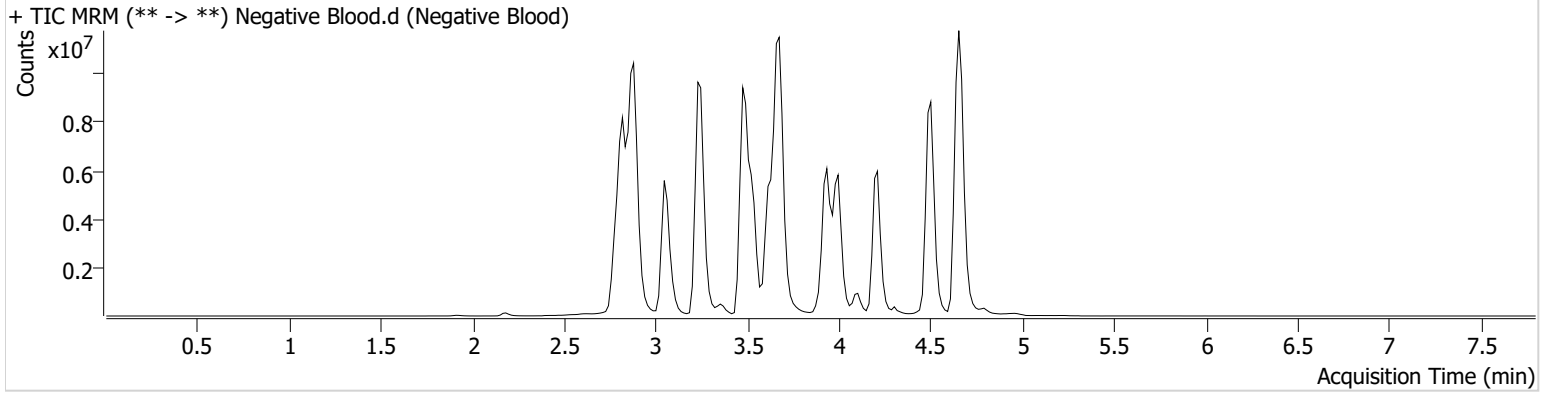
AM #25 Multi-Drug Screen Results



Batch results C:\Users\agerheart\Desktop\070821 AM 25 26 AG\QuantResults\AM 25.batch.bin
Calibration Last Update 7/13/2021 2:18:34 PM

Instrument	Falco (069901)	Data File	Negative Blood.d
Type	Sample	Sample	Negative Blood
Acq. Method	AM 25 MDS.m	Operator	Amber Gerheart
Sample Position	P6-C1	Comment	
Injection Volume	5		
Acq. Date-Time	7/8/2021 1:53:42 PM		
Sample Info.			

Sample Chromatogram



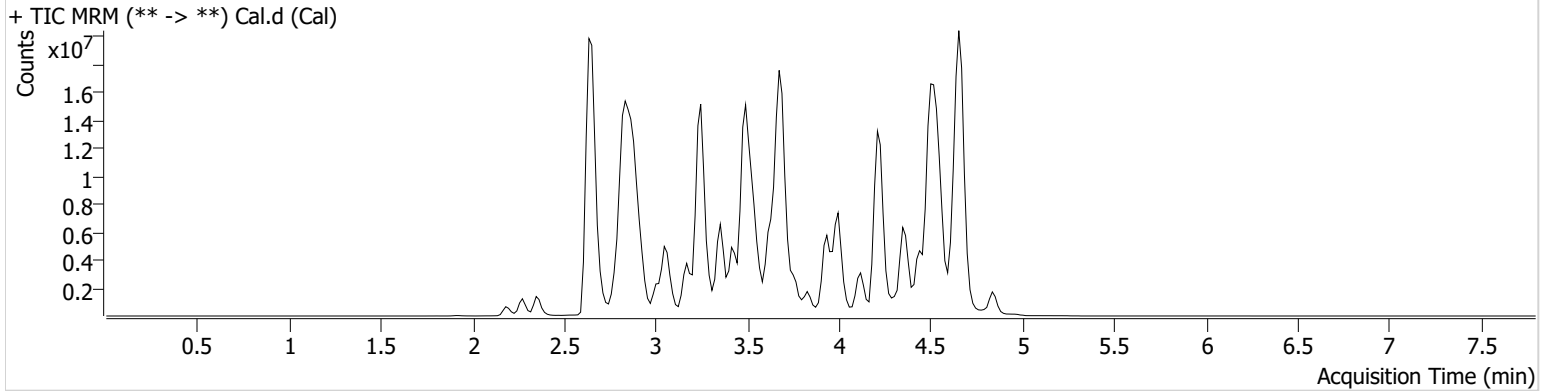
AM #25 Multi-Drug Screen Results



Batch results C:\Users\agerheart\Desktop\070821 AM 25 26 AG\QuantResults\AM 25.batch.bin
Calibration Last Update 7/13/2021 2:18:34 PM

Instrument	Falco (069901)	Data File	Cal.d
Type	Cal	Sample	Cal
Acq. Method	AM 25 MDS.m	Operator	Amber Gerheart
Sample Position	P6-A1	Comment	
Injection Volume	5		
Acq. Date-Time	7/8/2021 1:45:07 PM		

Sample Chromatogram



Name	RT	Resp.	S/N	S/N	ISTD Resp.	Calc. Conc.
6-MAM	2.801	78370	46329.13	513.69	2740818	10.0000
7-aminoclonazepam	3.538	2064514	617.29	3083420.59	13463502	10.0000
7-aminoflunitrazepam	3.768	4567718	1485411.63	4142.27	13463502	10.0000
Acetyl Fentanyl	3.672	42393	11.07	16648.24	29038285	10.0000
Acetyl Norfentanyl	2.840	443203	2374.02	182.93	29038285	10.0000
a-hydroxyalprazolam	4.515	748948	206.61	123019.39	13463502	10.0000
alpha-hydroxymidazolam	4.468	1649241	∞	501.89	13463502	10.0000
Alpha-PHP	3.696	1717380	8958.89	2512.27	29038285	10.0000
alpha-PVP	3.422	3934371	657.03	427.99	5500334	10.0000
Alprazolam	4.626	6007959	731.73	890.23	39194333	10.0000
Amitriptyline	4.324	60336	5.36	9.02	257697	10.0000
Amphetamine	2.829	1821873	332.40	1704.90	5500334	10.0000
Benzoylcegonine	3.369	599025	4833.11	2141.20	1051811	10.0000
Brompheniramine	3.934	12448	3389.94	49.25	11939014	10.0000
Buprenorphine	3.960	115380	65625.28	12727.21	507329	10.0000
Bupropion	3.620	1829419	5578.86	175.10	6564175	10.0000
Carbamazepine	4.234	21030667	3238.28	9838.96	2108744	10.0000
Carisoprodol	4.217	3128938	9875.23	264.45	19558772	10.0000
Chlordiazepoxide	4.551	2066865	198.56	1871.22	39194333	10.0000
Chlorpheniramine	3.830	1208188	2283.54	24.25	11939014	10.0000
Citalopram	3.979	634415	163.03	125342.19	11939014	10.0000
Clomipramine	4.501	84121	65719.47	17379.01	11939014	10.0000
Clonazepam	4.440	4740421	604.70	26965.05	39194333	10.0000
Clonazolam	4.375	4428555	1735393.63	816604.88	39194333	10.0000
Cocaethylene	3.688	3123907	2680005.52	4350.89	26626317	10.0000
Cocaine	3.475	5585982	45309.02	270.50	26626317	10.0000
Codeine	2.699	559565	651.50	178.42	13177030	10.0000
Cyclobenzaprine	4.246	106251	68.14	10.44	257697	10.0000
Desipramine	4.278	157400	65.54	105.31	257697	10.0000
Dextromethorphan	3.969	251045	254.91	53.33	1395473	10.0000
Dextrorphan	3.295	1780438	2841.05	510212.04	1395473	10.0000
Diazepam	4.843	2515642	1763.59	1635.70	39194333	10.0000
Dihydrocodeine	2.667	1436508	1033.46	706.18	13177030	10.0000
Diphenhydramine	3.940	1589642	3605.60	697.15	11939014	10.0000

Cal

AM #25 Multi-Drug Screen Results



Name	RT	Resp.	S/N	S/N	ISTD Resp.	Calc. Conc.
Doxepin	4.044	114165	110.60	14.19	2737957	10.0000
Doxylamine	3.509	6901423	584.80	1307.38	1395473	10.0000
EDDP	3.999	642711	720.83	1238.22	1728224	10.0000
Estazolam	4.535	15244132	3177.86	3736.10	39194333	10.0000
Etizolam	4.636	825550	750714.92	2753068.92	39194333	10.0000
Fentanyl	3.901	18263	7.76	8328.72	1367164	10.0000
Flualprazolam	4.484	2300342	1672529.83	1375603.41	39194333	10.0000
Flunitrazepam	4.564	7887888	1478.74	2338.37	39194333	10.0000
Fluoxetine	4.242	84442	69706.51	4.23 Low	171779	10.0000
Flurazepam	4.022	747541	1359.08	120616.06	39194333	10.0000
Hydrocodone	2.882	1906772	588.51	3148.35	13177030	10.0000
Hydromorphone	2.351	2172543	∞	887.15	353194	10.0000
Imipramine	4.291	256475	716.65	56.92	257697	10.0000
Ketamine	3.266	4458011	1605.47	117.13	21000301	10.0000
Lamotrigine	3.403	434306	833.54	1551.23	11939014	10.0000
Levamisole	2.841	3418169	19693.52	625.09	26626317	10.0000
Levetiracetam	2.644	2154724	1117.61	1407.20	11939014	10.0000
Lorazepam	4.424	1553599	431.50	437.26	39194333	10.0000
Maprotiline	4.324	29487	∞	12.97	257697	10.0000
MDA	2.933	1924665	2325.90	196.75	17319634	10.0000
MDEA	3.161	2753657	2038.61	460.68	17319634	10.0000
MDMA	3.009	3824467	2996137.57	1162.29	17319634	10.0000
Meperidine	3.496	1251665	321.98	992.32	1395473	10.0000
Meprobamate	3.652	1788692	7137.61	10236.94	19558772	10.0000
Methadone	4.303	686615	199.55	62.09	1728224	10.0000
Methamphetamine	2.920	3731370	301.61	420.82	17319634	10.0000
Methocarbamol	3.573	1255479	674.15	3283.84	1728224	10.0000
Methylphenidate	3.421	6041825	1284.04	1021.67	12309858	10.0000
Metoprolol	3.371	571868	277.12	797105.04	1395473	10.0000
Midazolam	4.301	330422	640574.43	2090.10	39194333	10.0000
Mirtazapine	3.571	558669	525.73	402.02	1395473	10.0000
Mitragynine	4.037	31377	173.01	61523.68	1395473	10.0000
Morphine	2.186	438275	11920.62	1017.90	353194	10.0000
Norbuprenorphine	3.731	19365	20321.74	11569.26	507329	10.0000
Nordiazepam	4.692	3266242	1659.70	416.77	39194333	10.0000
Norfentanyl	3.252	7258327	646.10	292.07	29038285	10.0000
Norhydrocodone	2.852	42009	∞	24.48	353194	10.0000
Norketamine	3.237	842094	218.35	1885.86	21000301	10.0000
Normeperidine	3.513	1008409	366.04	191.84	11939014	10.0000
Noroxycodone	2.820	1382617	1118.33	108.32	21000301	10.0000
Nortriptyline	4.325	45610	17497.99	15.20	257697	10.0000
O-desmethyl-tramadol	2.853	10718290	1856.57	451.10	11939014	10.0000
Olanzapine	3.077	86709	46895.80	25002.48	2108744	10.0000
Oxazepam	4.505	6631288	1620.54	830.95	28465143	10.0000
Oxycodone	2.833	4438174	1470.07	611.61	21000301	10.0000
Oxymorphone	2.271	2372378	7857.36	707.60	353194	10.0000
Paroxetine	4.239	16065	68.87	6.37	171779	10.0000
Phenazepam	4.636	4730398	2857438.63	1074.64	39194333	10.0000
Phencyclidine	3.834	1615458	418746.38	247.10	1395473	10.0000
Phentermine	3.072	949607	85.82	14.67	12309858	10.0000
Phenytoin	4.126	3739136	2843321.71	5388.73	2108744	10.0000
Promethazine	4.198	300949	1046.89	54.89	11939014	10.0000
Pseudoephedrine	2.644	47039404	13417.28	6345.06	17319634	10.0000
Quetiapine	4.130	579193	130990.60	262.44	37759829	10.0000
Sertraline	4.457	35969	21885.37	24.03	171779	10.0000
Sufentanil	4.145	9807	7900.60	22.82	29038285	10.0000
Tapentadol	3.360	4665273	444.49	275.64	21000301	10.0000
Temazepam	4.673	11478188	248.90	253.75	39194333	10.0000
Tramadol	3.341	10039038	6652.98	118.31	11939014	10.0000
Trazodone	3.961	572322	1187.25	231.15	2737957	10.0000

Cal

Handwritten signature

AM #25 Multi-Drug Screen Results



Name	RT	Resp.	S/N	S/N	ISTD Resp.	Calc. Conc.
Venlafaxine	3.707	4860390	546.75	200.76	171779	10.0000
Zaleplon	4.351	8036069	1459.02	5496589.60	37759829	10.0000
Zolpidem	3.674	9811251	5878.49	3051.38	37759829	10.0000
Zopiclone	3.624	1214308	1398.14	503797.84	6294507	10.0000



AM# 26: Screening of THC and Metabolites in Blood and Urine by LC-MS/MS

Extraction Date: 7/08/2021

Analyst: Amber Gerheart

Plate lot#: 210609

Plate Retest Date: 12/09/2021

Mobile phase A: 0.1% Formic Acid in LCMS Water **Mobile phase B:** 0.1% Formic acid in Acetonitrile

Blank Blood Lot: Lampire 20L20723

Column: Phenomenex Phenyl Hexyl (4.6x50mm, 2.6um)

LCMS-QQ ID: 069901

Blank Urine Lot: N/A

Pre-Analytic:

- 1. Check levels of mobile phases and needle wash refill as needed. Ensure waste is not full.
- 2. Ensure correct column is installed and begin mobile phase flow allow to equilibrate ~ 30 minutes.

Analytic:

- 1. Remove standards, plate, controls, and samples from cold storage. Allow to reach room temperature.
- 2. Urine hydrolysis: add 1.5mL urine to blank plate, add 250µl 1N KOH. Shake and incubate at 40 degrees for 15 minutes.
Using a calibrated pipette, add **1000µl blood and urine (if applicable) (calibrated pipette)** into the appropriate wells of analytical (standards) plate. **Pipette ID: 16**
- 3. Place on shaking incubator at ambient temp., 900rpm for 15 minutes.
- 4. Pipette **500µL 0.1% formic acid in water blood sample, 500 µL saturated phosphate buffer in urine** in wells of analytical plate.
- 5. Place on shaking incubator at ambient temp., 900rpm for 15 minutes.
- 6. Transfer **700-800µL of blood+acid or urine+acid** mixture to corresponding wells of SLE+ plate.
Amount transferred: 800µL
- 7. Apply positive pressure for approx. 10-15 seconds (or until no liquid remains on top of sorbent).
(Load at 85-100 PSI- Selector to the right)
- 8. Wait 5 minutes.
- 9. Add **2.25mL MTBE. (Add in 3 increments of 750uL)**
- 10. Wait 5 minutes.
- 11. Apply positive pressure for approx. 15 seconds. *(10-15 PSI- Selector to the left).*
- 12. Add **2.25mL Hexane. (Add in 3 increments of 750uL)**
- 13. Wait 5 minutes.
- 14. Apply positive pressure for approx. 15 seconds. *(10-15 PSI- Selector to the left).*
- 15. Remove plate containing eluate. Place on SPE Dry and evaporate to dryness at approx. 35°C.
- 16. Reconstitute in **100µL 100% MeOH** and heat seal plate with foil. Place in autosampler and run worklist.

Post-Analytic

- 1. Create batch and process data.
- 2. Make any necessary integration changes, R² values ≥0.98 for each analyte
- 3. RT +/- 2% or 0.100 min, whichever is greater
- 4. Confirmation testing on case samples with a response for THC and OH-THC of 3ng/mL or greater and/or Carboxy-THC at 10ng/mL or greater (analyst discretion between 5-10ng/mL) may be pursued.
- 5. Did all QCs pass for each analyte? (if not, describe in comments section)
- 6. Central File Packet to include: LIMS Worklist, Method Checklist, Calibration and Control Reports

COMMENTS:

Curve Range: THC-OH 3-100 ng/mL, THC-COOH 5-100 ng/mL
P2021-2120-2 moved due to blood clot.

	1	2	3	4	5	6
A	IS + Cal. 1	Blood Negative	M2021-2828-3	P2021-2135-1	P2021-2198-1	IS + QC_1
B	IS + Cal. 2	M2021-0310-2	P2021-2082-1	P2021-2136-1	P2021-2199-1	IS + Cal. 7
C	IS + Cal. 3	M2021-0928-1	P2021-2086-1	P2021-2139-1	P2021-2204-1	IS + Cal. 6
D	IS + Cal. 4	M2021-2473-1	P2021-2087-1	P2021-2165-1	P2021-2120-2	IS + Cal. 5
E	IS + Cal. 5	M2021-2636-1	P2021-2088-1	P2021-2174-1	IS + Sample	IS + Cal. 4
F	IS + Cal. 6	M2021-2700-2	P2021-2120-2 (Moved to D5)	P2021-2185-1	IS + Sample	IS + Cal. 3
G	IS + Cal. 7	M2021-2777-2	P2021-2133-1	P2021-2189-1	IS + Sample	IS + Cal. 2
H	IS + QC_1	M2021-2781-2	P2021-2134-1	P2021-2197-1	IS + Sample	IS + Cal. 1

All wells to contain 100 μ l of residual DMSO

210609

Handwritten initials/signature

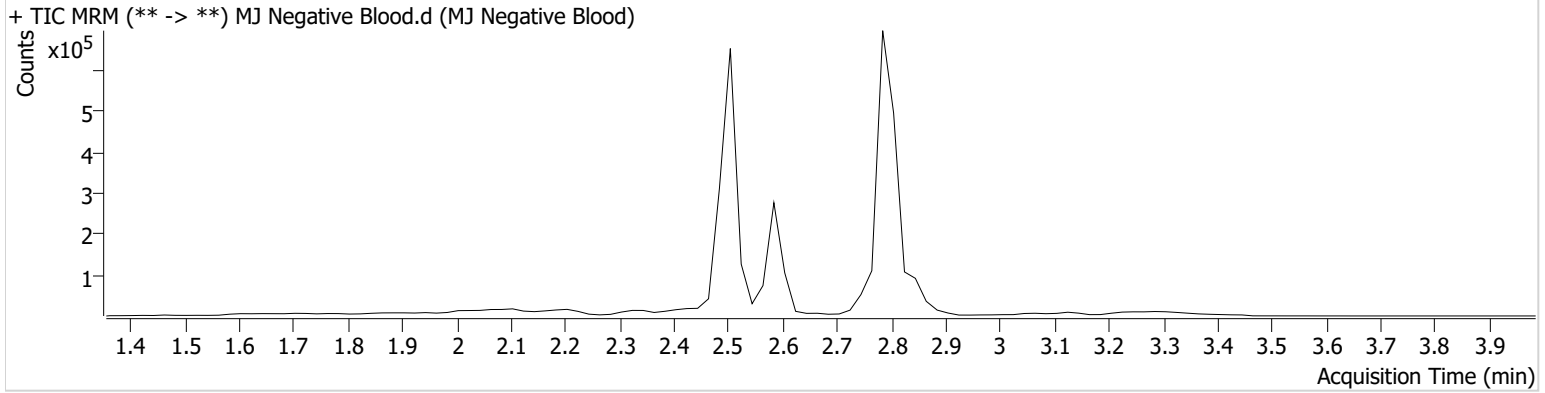
AM #26 Cannabinoids Screen Results



Batch results D:\MassHunter\Data\2021\AM 25-26\070821 AM 25 26 AG\QuantResults\AM 26.batch.bin
Calibration Last Update 7/12/2021 2:46:31 PM

Instrument	Falco (069901)	Data File	MJ Negative Blood.d
Type	Sample	Sample	MJ Negative Blood
Acq. Method	AM 26 THCS.m	Operator	Amber Gerheart
Sample Position	P5-A2	Comment	
Injection Volume	10		
Acq. Date-Time	7/8/2021 7:12:48 PM		
Sample Info.			

Sample Chromatogram



Handwritten initials/signature

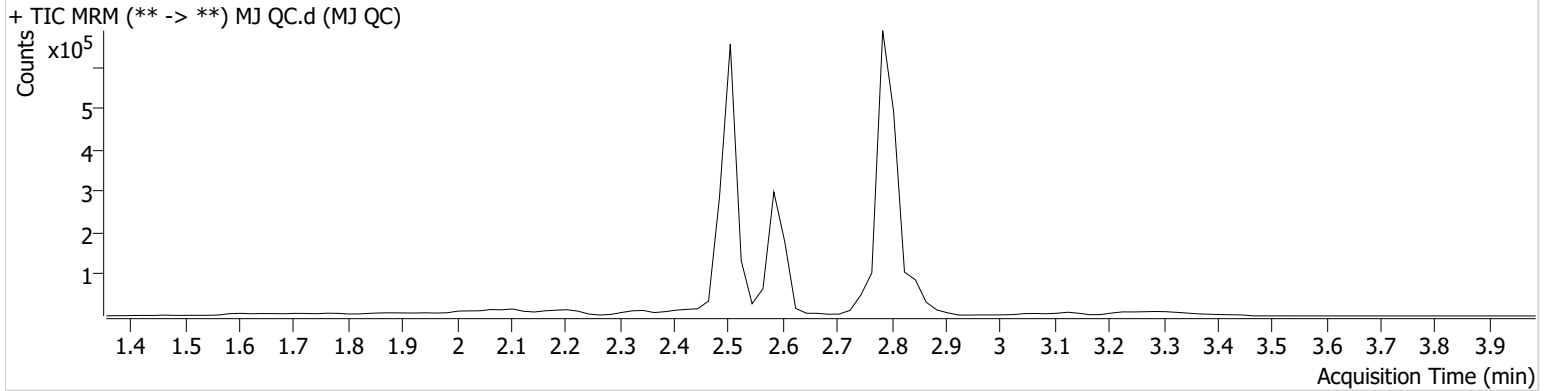
AM #26 Cannabinoids Screen Results



Batch results D:\MassHunter\Data\2021\AM 25-26\070821 AM 25 26 AG\QuantResults\AM 26.batch.bin
Calibration Last Update 7/12/2021 2:46:31 PM

Instrument	Falco (069901)	Data File	MJ QC.d
Type	QC	Sample	MJ QC
Acq. Method	AM 26 THCS.m	Operator	Amber Gerheart
Sample Position	P5-H1	Comment	
Injection Volume	10		
Acq. Date-Time	7/8/2021 7:06:17 PM		
Sample Info.			

Sample Chromatogram



Name	RT	Resp.	ISTD Resp.	Final Conc.
THC	2.859	4125	109884	4.6133 ng/ml
THC-COOH	2.607	64693	383820	14.7544 ng/ml
THC-OH	2.514	11056	1201418	5.4024 ng/ml

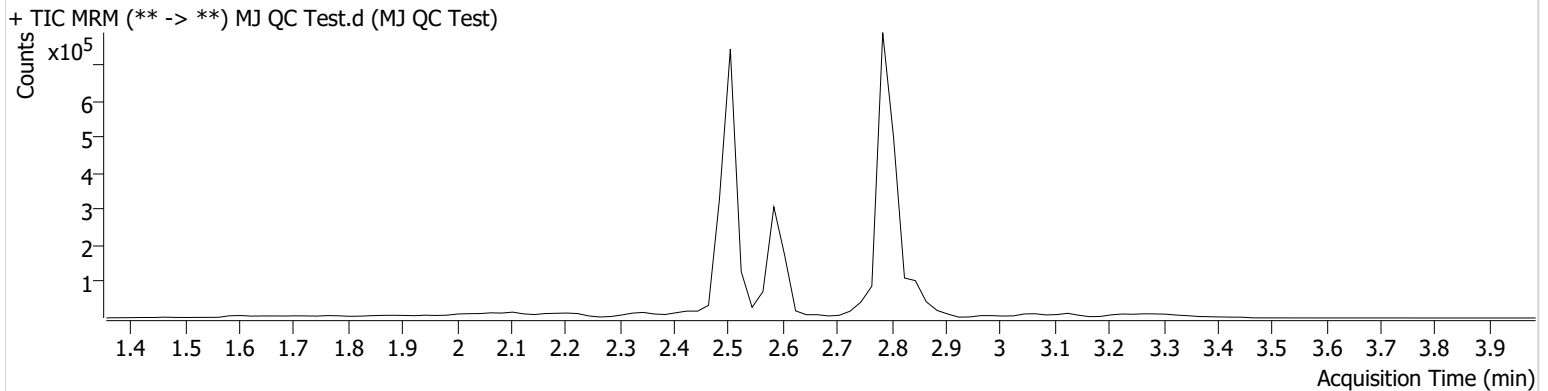
AM #26 Cannabinoids Screen Results



Batch results D:\MassHunter\Data\2021\AM 25-26\070821 AM 25 26 AG\QuantResults\AM 26.batch.bin
Calibration Last Update 7/12/2021 2:46:31 PM

Instrument	Falco (069901)	Data File	MJ QC Test.d
Type	QC	Sample	MJ QC Test
Acq. Method	AM 26 THCS.m	Operator	Amber Gerheart
Sample Position	P5-H1	Comment	
Injection Volume	10		
Acq. Date-Time	7/9/2021 7:35:54 AM		

Sample Chromatogram

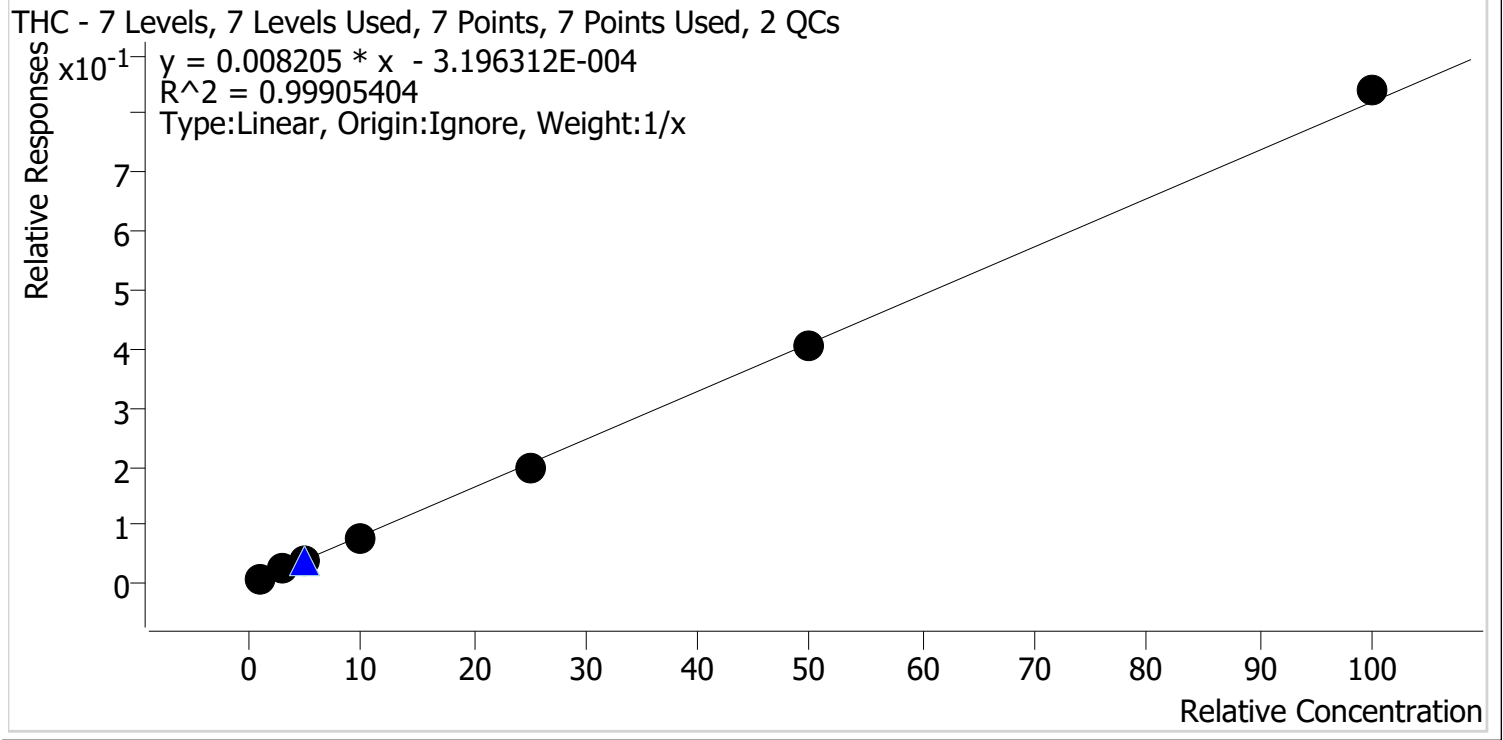


Name	RT	Resp.	ISTD Resp.	Final Conc.
THC	2.859	5488	136679	4.9324 ng/ml
THC-COOH	2.607	65404	386891	14.7982 ng/ml
THC-OH	2.514	11660	1331069	5.1365 ng/ml



AM #26 Cannabinoids Screen Calibration Curve Report

Batch results D:\MassHunter\Data\2021\AM 25-26\070821 AM 25 26 AG\QuantResults\AM 26.batch.bin
Last Cal. Update 7/12/2021 2:46 PM
Analyst Name ISP\Datastor
Analyte THC **Internal Standard** THC-D3



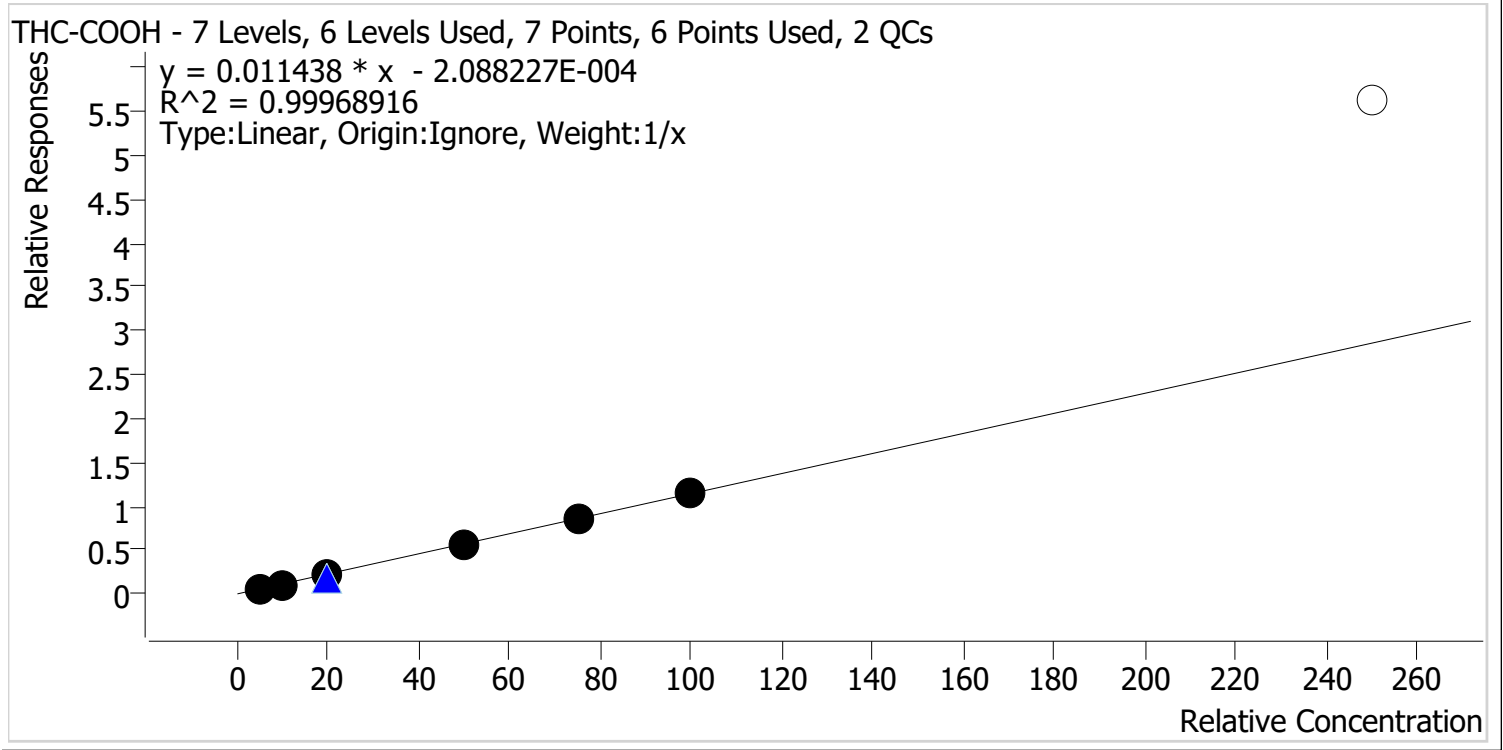
Sample	Level	Enabled	Expected Concentration	Final Concentration	Accuracy
MJ Cal 1	1	✓	1.0	1.1	109.3
MJ Cal 2	2	✓	3.0	3.0	101.4
MJ Cal 3	3	✓	5.0	4.9	98.6
MJ Cal 4	4	✓	10.0	9.4	94.0
MJ Cal 5	5	✓	25.0	24.0	95.9
MJ Cal 6	6	✓	50.0	49.2	98.4
MJ Cal 7	7	✓	100.0	102.4	102.4

Handwritten signature



AM #26 Cannabinoids Screen Calibration Curve Report

Batch results D:\MassHunter\Data\2021\AM 25-26\070821 AM 25 26 AG\QuantResults\AM 26.batch.bin
Last Cal. Update 7/12/2021 2:46 PM
Analyst Name ISP\Datastor
Analyte THC-COOH **Internal Standard** THC-COOH-D9



Sample	Level	Enabled	Expected Concentration	Final Concentration	Accuracy
MJ Cal 1	1	✓	5.0	5.2	103.3
MJ Cal 2	2	✓	10.0	10.0	100.1
MJ Cal 3	3	✓	20.0	19.1	95.4
MJ Cal 4	4	✓	50.0	50.2	100.5
MJ Cal 5	5	✓	75.0	75.6	100.8
MJ Cal 6	6	✓	100.0	99.9	99.9
MJ Cal 7	7	✗	250.0	491.7	196.7

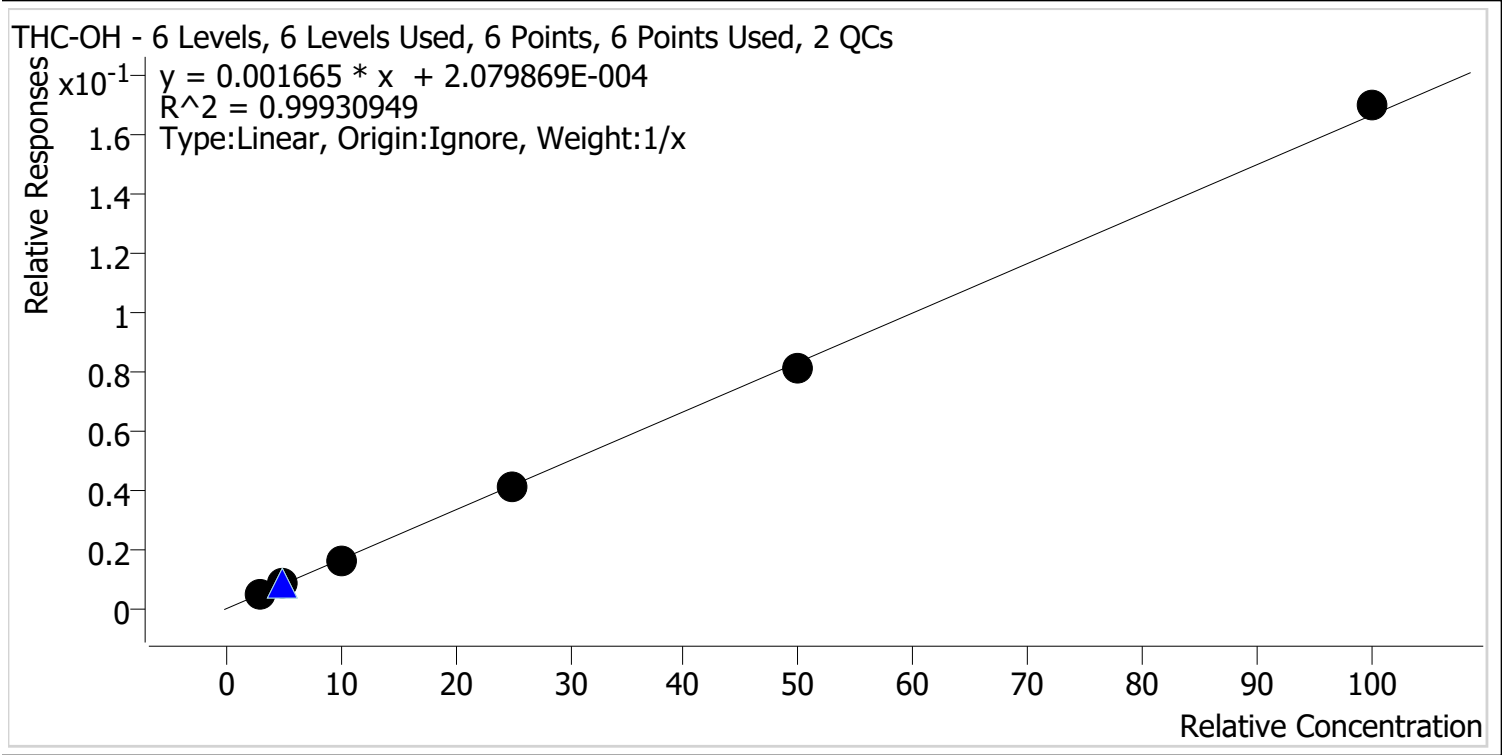
*Cal 7 dropped due to accuracy

Handwritten signature/initials.



AM #26 Cannabinoids Screen Calibration Curve Report

Batch results D:\MassHunter\Data\2021\AM 25-26\070821 AM 25 26 AG\QuantResults\AM 26.batch.bin
Last Cal. Update 7/12/2021 2:46 PM
Analyst Name ISP\Datastor
Analyte THC-OH **Internal Standard** THC-OH-D3



Sample	Level	Enabled	Expected Concentration	Final Concentration	Accuracy
MJ Cal 2	2	✓	3.0	3.1	103.2
MJ Cal 3	3	✓	5.0	5.1	102.8
MJ Cal 4	4	✓	10.0	9.7	97.0
MJ Cal 5	5	✓	25.0	24.4	97.5
MJ Cal 6	6	✓	50.0	48.8	97.5
MJ Cal 7	7	✓	100.0	101.9	101.9

Handwritten initials/signature

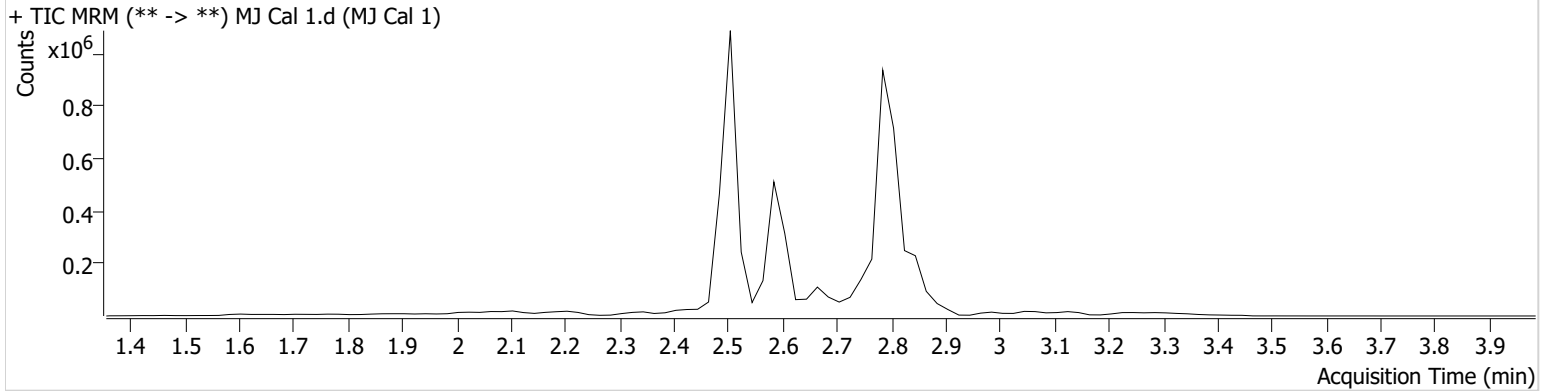
AM #26 Cannabinoids Screen Results



Batch results D:\MassHunter\Data\2021\AM 25-26\070821 AM 25 26 AG\QuantResults\AM 26.batch.bin
Calibration Last Update 7/12/2021 2:46:31 PM

Instrument	Falco (069901)	Data File	MJ Cal 1.d
Type	Cal	Sample	MJ Cal 1
Acq. Method	AM 26 THCS.m	Operator	Amber Gerheart
Sample Position	P5-A1	Comment	
Injection Volume	10		
Acq. Date-Time	7/8/2021 6:20:29 PM		

Sample Chromatogram



Name	RT	Resp.	ISTD Resp.	Final Conc.	
THC	2.859	2368	273682	1.0934 ng/ml	Low
THC-COOH	2.607	43863	745271	5.1639 ng/ml	

AG

AM #26 Cannabinoids Screen Results

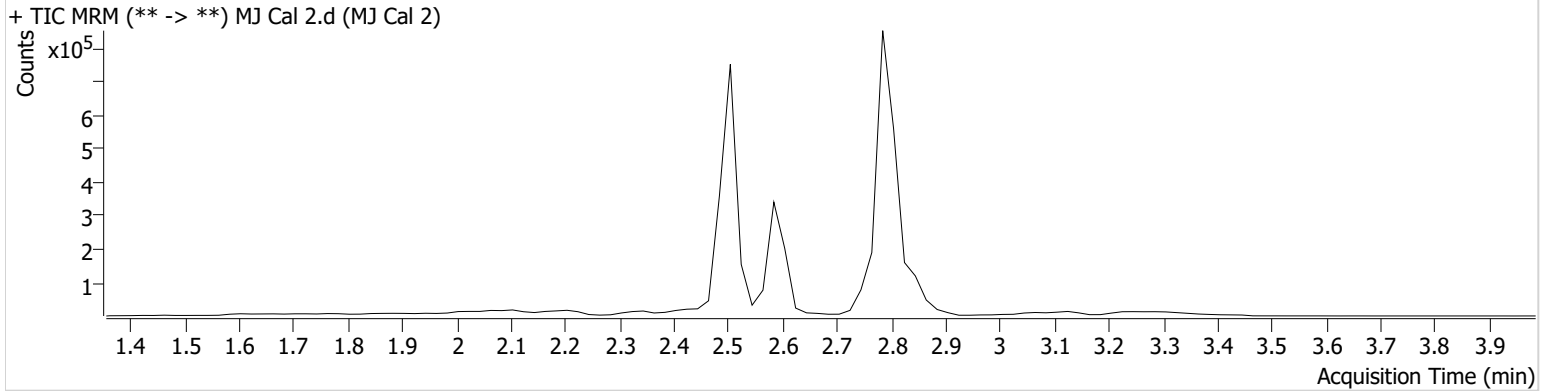


Batch results D:\MassHunter\Data\2021\AM 25-26\070821 AM 25 26 AG\QuantResults\AM 26.batch.bin
Calibration Last Update 7/12/2021 2:46:31 PM

Instrument	Falco (069901)	Data File	MJ Cal 2.d
Type	Cal	Sample	MJ Cal 2
Acq. Method	AM 26 THCS.m	Operator	Amber Gerheart
Sample Position	P5-B1	Comment	
Injection Volume	10		
Acq. Date-Time	7/8/2021 6:27:10 PM		

Sample Info.

Sample Chromatogram



Name	RT	Resp.	ISTD Resp.	Final Conc.
THC	2.859	3890	157925	3.0408 ng/ml
THC-COOH	2.607	55822	488323	10.0125 ng/ml
THC-OH	2.514	7840	1462167	3.0956 ng/ml

AG

AM #26 Cannabinoids Screen Results

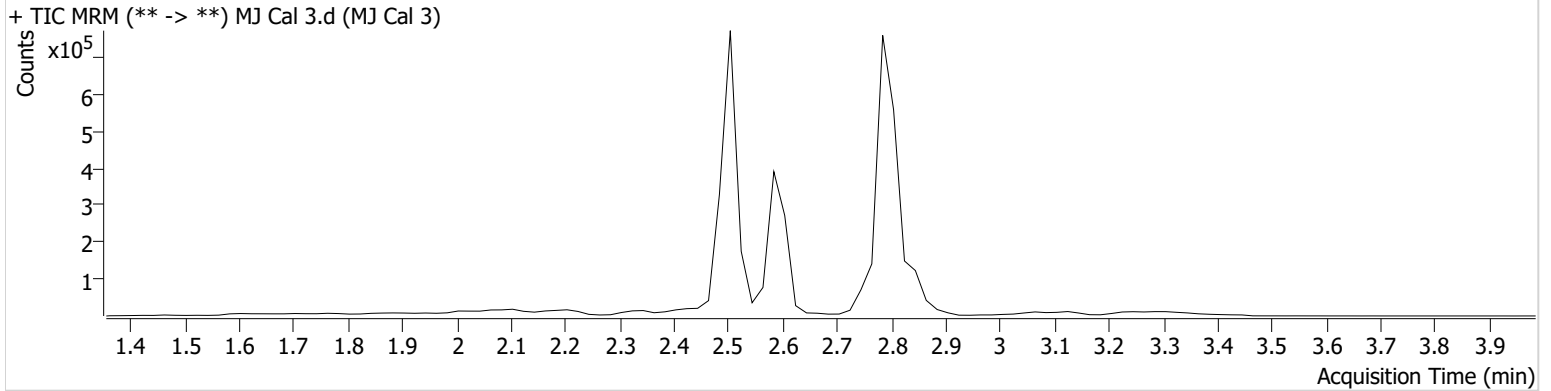


Batch results D:\MassHunter\Data\2021\AM 25-26\070821 AM 25 26 AG\QuantResults\AM 26.batch.bin
Calibration Last Update 7/12/2021 2:46:31 PM

Instrument	Falco (069901)	Data File	MJ Cal 3.d
Type	Cal	Sample	MJ Cal 3
Acq. Method	AM 26 THCS.m	Operator	Amber Gerheart
Sample Position	P5-C1	Comment	
Injection Volume	10		
Acq. Date-Time	7/8/2021 6:33:41 PM		

Sample Info.

Sample Chromatogram



Name	RT	Resp.	ISTD Resp.	Final Conc.
THC	2.859	6127	152597	4.9324 ng/ml
THC-COOH	2.607	108376	496875	19.0878 ng/ml
THC-OH	2.514	12626	1440371	5.1401 ng/ml

Handwritten initials/signature

AM #26 Cannabinoids Screen Results

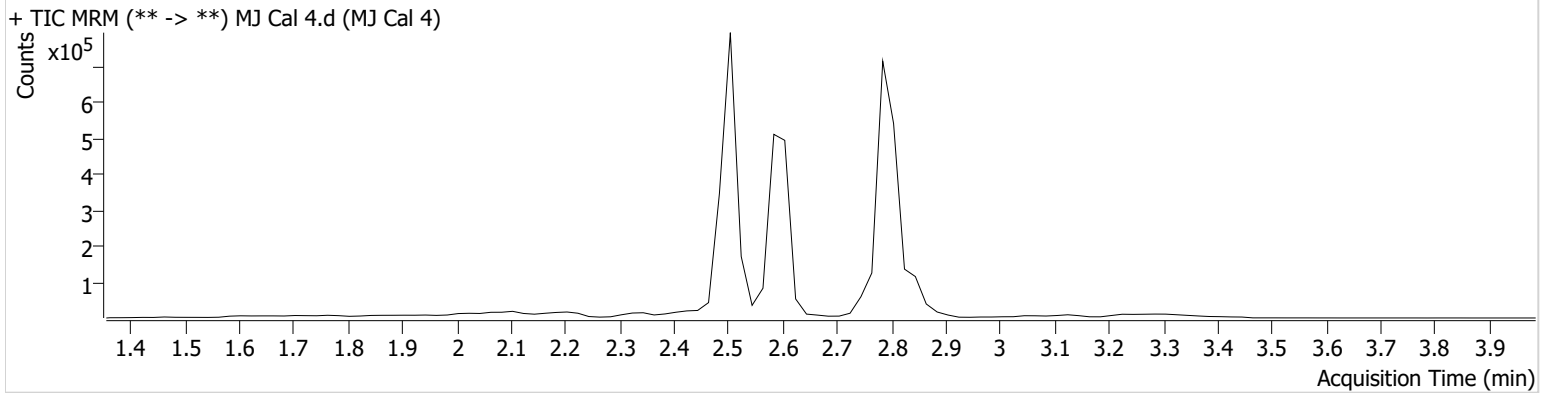


Batch results D:\MassHunter\Data\2021\AM 25-26\070821 AM 25 26 AG\QuantResults\AM 26.batch.bin
Calibration Last Update 7/12/2021 2:46:31 PM

Instrument	Falco (069901)	Data File	MJ Cal 4.d
Type	Cal	Sample	MJ Cal 4
Acq. Method	AM 26 THCS.m	Operator	Amber Gerheart
Sample Position	P5-D1	Comment	
Injection Volume	10		
Acq. Date-Time	7/8/2021 6:40:12 PM		

Sample Info.

Sample Chromatogram



Name	RT	Resp.	ISTD Resp.	Final Conc.
THC	2.859	11061	144034	9.3981 ng/ml
THC-COOH	2.607	280132	487725	50.2342 ng/ml
THC-OH	2.514	22710	1387916	9.7034 ng/ml

AG

AM #26 Cannabinoids Screen Results

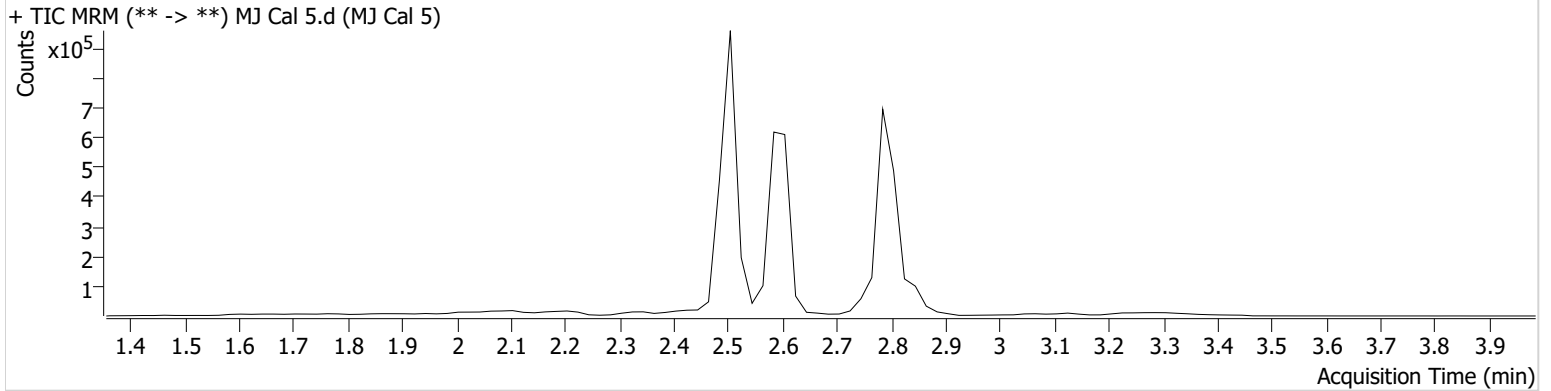


Batch results D:\MassHunter\Data\2021\AM 25-26\070821 AM 25 26 AG\QuantResults\AM 26.batch.bin
Calibration Last Update 7/12/2021 2:46:31 PM

Instrument	Falco (069901)	Data File	MJ Cal 5.d
Type	Cal	Sample	MJ Cal 5
Acq. Method	AM 26 THCS.m	Operator	Amber Gerheart
Sample Position	P5-E1	Comment	
Injection Volume	10		
Acq. Date-Time	7/8/2021 6:46:43 PM		

Sample Info.

Sample Chromatogram



Name	RT	Resp.	ISTD Resp.	Final Conc.
THC	2.859	23158	117899	23.9765 ng/ml
THC-COOH	2.607	403509	466972	75.5652 ng/ml
THC-OH	2.514	58627	1436793	24.3841 ng/ml

AG

AM #26 Cannabinoids Screen Results

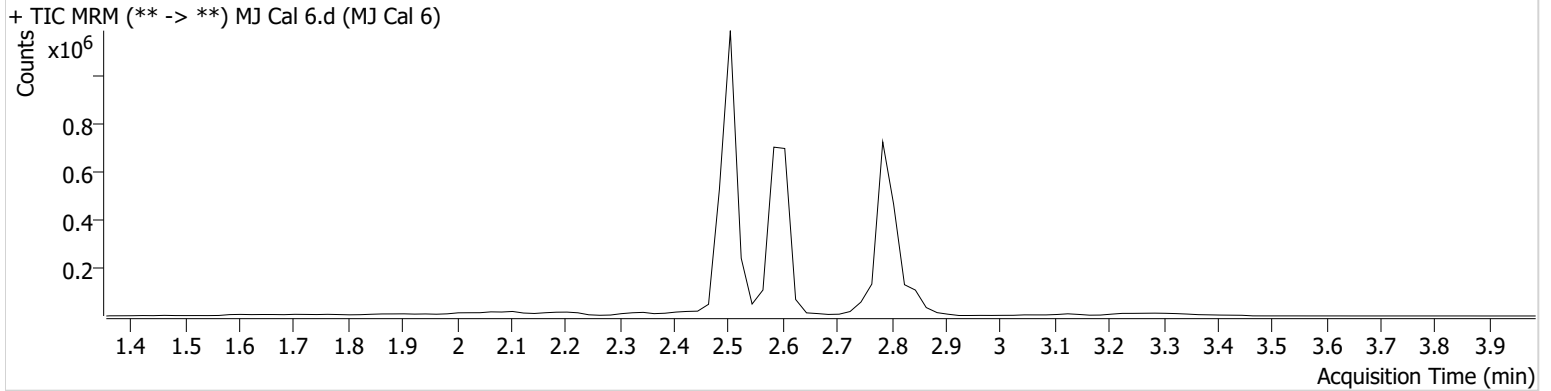


Batch results D:\MassHunter\Data\2021\AM 25-26\070821 AM 25 26 AG\QuantResults\AM 26.batch.bin
Calibration Last Update 7/12/2021 2:46:31 PM

Instrument	Falco (069901)	Data File	MJ Cal 6.d
Type	Cal	Sample	MJ Cal 6
Acq. Method	AM 26 THCS.m	Operator	Amber Gerheart
Sample Position	P5-F1	Comment	
Injection Volume	10		
Acq. Date-Time	7/8/2021 6:53:14 PM		

Sample Info.

Sample Chromatogram



Name	RT	Resp.	ISTD Resp.	Final Conc.
THC	2.859	45433	112619	49.2040 ng/ml
THC-COOH	2.607	498741	436401	99.9364 ng/ml
THC-OH	2.514	112232	1378845	48.7650 ng/ml

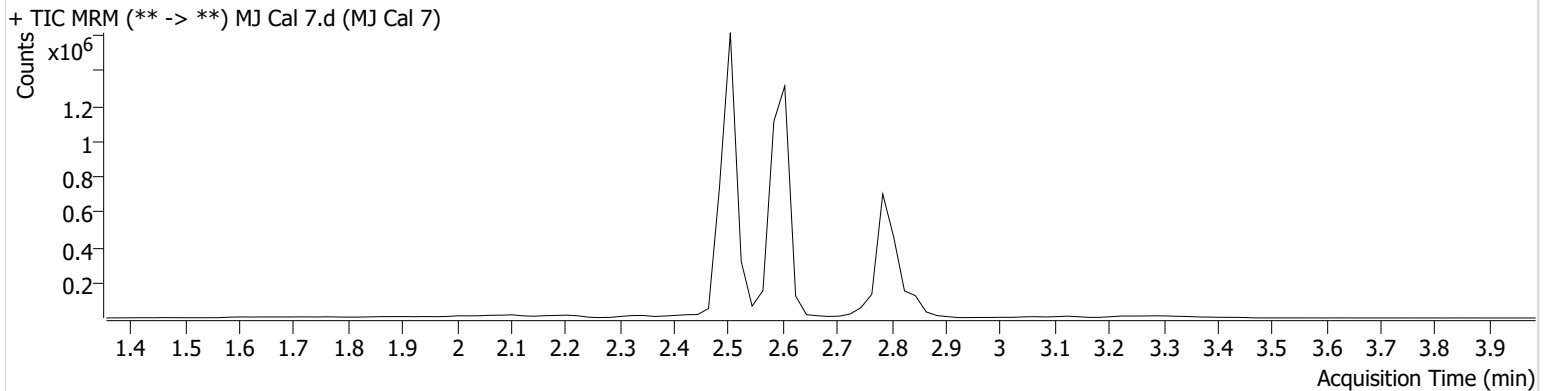
AM #26 Cannabinoids Screen Results



Batch results D:\MassHunter\Data\2021\AM 25-26\070821 AM 25 26 AG\QuantResults\AM 26.batch.bin
Calibration Last Update 7/12/2021 2:46:31 PM

Instrument	Falco (069901)	Data File	MJ Cal 7.d
Type	Cal	Sample	MJ Cal 7
Acq. Method	AM 26 THCS.m	Operator	Amber Gerheart
Sample Position	P5-G1	Comment	
Injection Volume	10		
Acq. Date-Time	7/8/2021 6:59:46 PM		

Sample Chromatogram



Name	RT	Resp.	ISTD Resp.	Final Conc.
THC	2.859	93215	111030	102.3548 ng/ml
THC-COOH	2.587	1117088	198638	491.6936 ng/ml
THC-OH	2.514	223887	1317926	101.9118 ng/ml